

TITAN *Compact Series*

Trans-Industrial Technology Advanced Node

SK-WP
Dust & Waterproof Digital Scales



Washable!

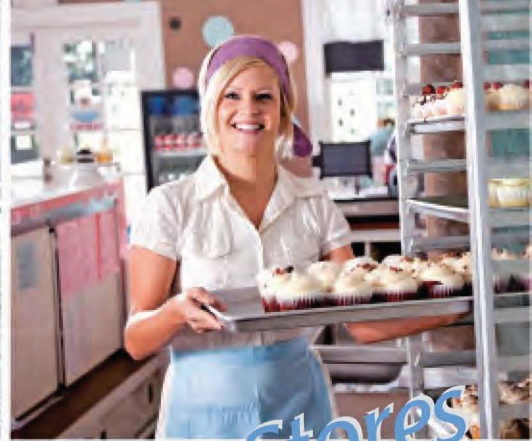
IP65



**—Weigh
More**
SOLUTIONS



Food Service



Stores

Perfect choice for any application if washing after use is necessary!!

TITAN Compact Series

SK-WP

Dust & Waterproof Digital Scales



Model Capacity & Resolution

SK-1000WP	1000g x 0.5g
SK-2000WP	2000g x 1g
SK-5000WP	5000g x 2g
SK-5001WP	5000g x 1g
SK-10KWP	10kg x 0.005kg
SK-20KWP	20kg x 0.01kg

- Washable (Dust & Waterproof, IP-65)
- Stainless Steel Body and Weighing Pan
- 1/2000 Resolution (SK-5001WP: 1/5000)
- Large & Clear LCD Display (25mm)
- Large Square Weighing Pan
- Designed to Meet Weights & Measures Regulations
- Portable (6 D Type Batteries, Batteries not included)
- Net Weight / Stability Indication
- Low Battery Indication
- Separate Keys for Power and Re-Zero
- Auto Power Off
- AC Adaptor (option)

Specifications

SK-WP	SK-1000WP	SK-2000WP	SK-5000WP	SK-5001WP	SK-10KWP	SK-20KWP
Capacity/Resolution*	1000 x 0.5g	2000 x 1g	5000 x 2g	5000 x 1g	10k x 0.005kg	20k x 0.01kg
Linearity	±1g	±2g	±4g	±4g	±0.01kg	±0.02kg
Repeatability	±0.5g	±1g	±2g	±2g	±0.005kg	±0.01kg
Display	25mm / 0.98 inch, 7segment LCD					
Pan Size	232(W) x 192(D)mm / 9.13(W) x 7.56(D)inches					
Battery Life (Approx.)	600 hours with manganese type 1200 hours with alkaline cells at 20°C/68°F					
Operating Temp.	-10°C-40°C / 14°F-104°F, Less than 85%RH					
Weight (Approx.)	2.9kg / 6.4lb					3.2kg / 7.1lb
Calibration Mass(option)	1000g	2000g	5000g	5000g	10kg	20kg
Power	6 x R20P / LR20 / "D" size batteries					

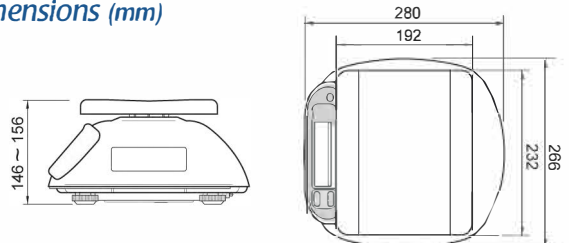
* 1b version available

Specifications subject to change for improvement without notice.

Accessories

- AX-TB125 AC Adaptor AC200~240V 'C'plug
- AX-TB126 AC Adaptor AC200~240V 'BF/5/no'plug
- AX-TB196 AC Adaptor AC100V
- AX-TB202 AC Adaptor AC120V

Dimensions (mm)



www.weigh-more.com.au

